




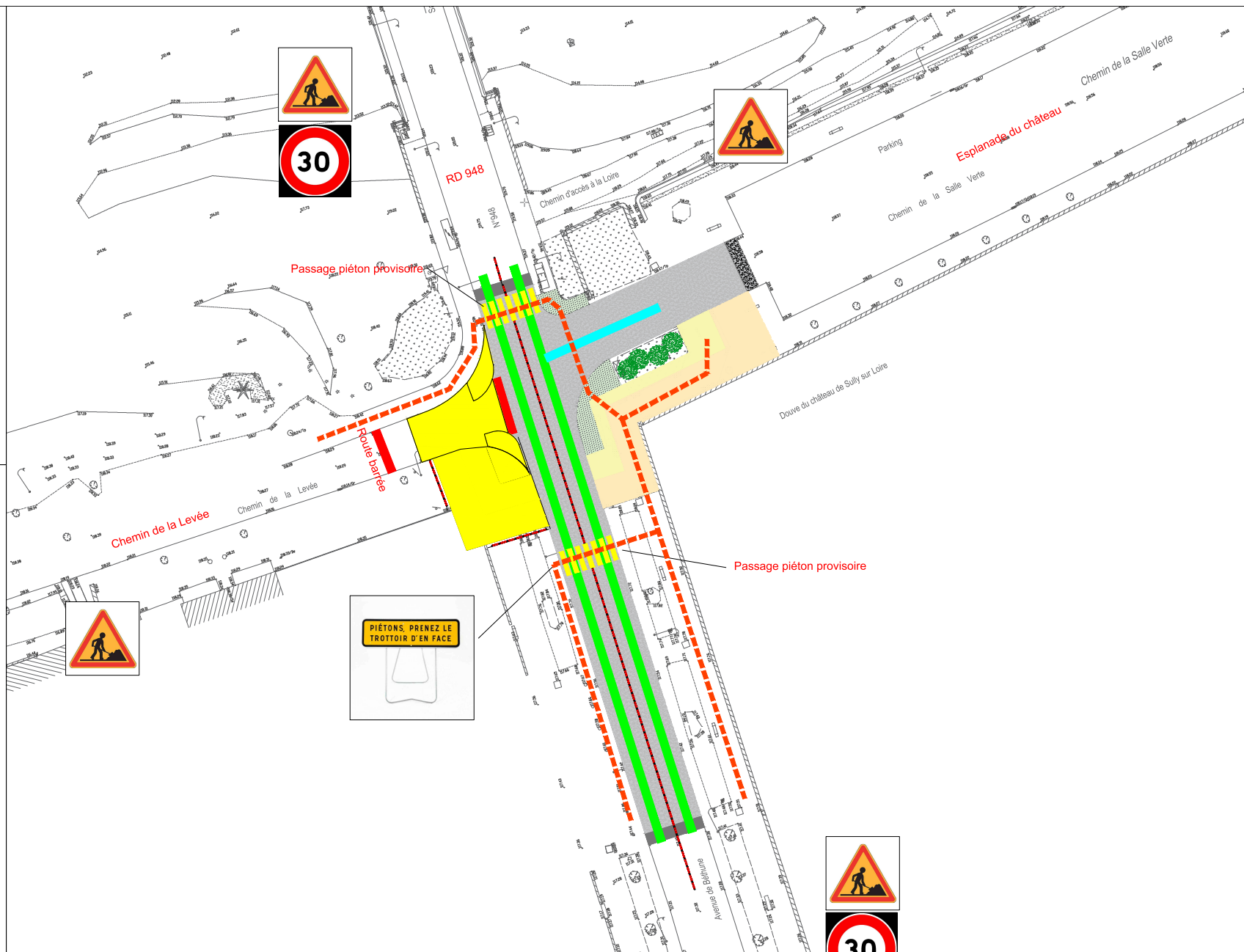


-  zone de travaux
-  circulation véhicules
-  accès riverain
-  AK5 triflash
-  cheminement piéton



RD948 - Chemins de la Levée et de la Salle Verte  
 Aménagement d'un plateau surélevé sur  
 la commune de Sully-sur-Loire

PLAN D'EXPLOITATION  
 BALISAGE DE JOUR